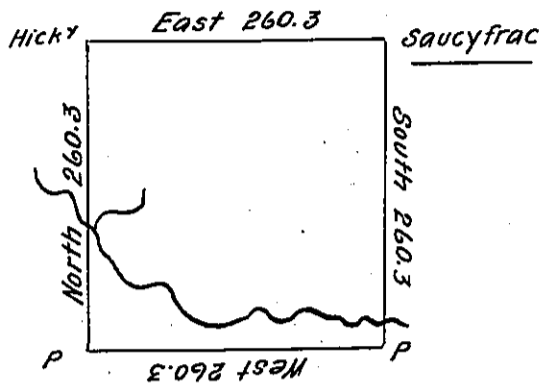




Timothy Matlock



10

The above is the draught of a Survey made December 10th 1794
 in pursuance of a Warrant granted to George Meade on the 14th day of April
 1792 Situate Northwest of the Ohio River on the Waters of Big Beaver Creek
 adjoining land granted to Timothy Matlock. Called Tribulation. Containing
 four hundred acres with the usual allowance of 6 P^r Cent &c^o.

Jno Hoge D. S.

Daniel Brodhead Esq S. G.

IN TESTIMONY that the above is a copy of the original remaining on file in
 the Department of Internal Affairs of Pennsylvania, made
 conformably to an Act of Assembly approved the 16th day of
 February, 1833, I have hereunto set my Hand and caused
 the Seal of said Department to be affixed at Harrisburg,
 this sixth day of December 1905.

Isaac P. Brown
 Secretary of Internal Affairs.